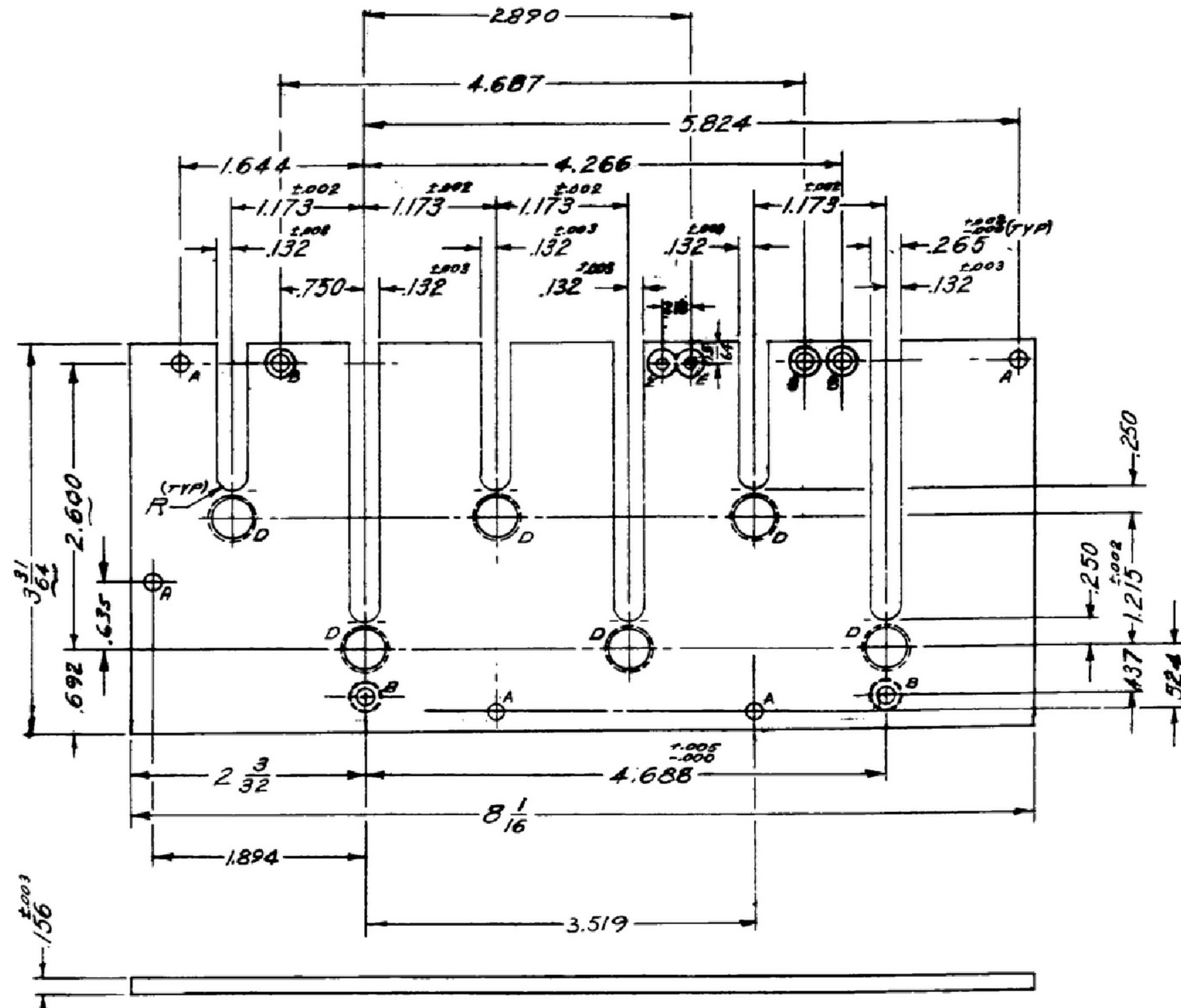


NOTICE: WHEN GOVERNMENT DRAWINGS, SPECIFICATIONS, OR OTHER DATA ARE USED FOR ANY PURPOSE OTHER THAN IN CONNECTION WITH A DEFINITELY RELATED GOVERNMENT PROCUREMENT OPERATION, THE UNITED STATES GOVERNMENT TAKES NO RESPONSIBILITY FOR ANY OBLIGATION WHATSOEVER, AND THE FACT THAT THE GOVERNMENT MAY HAVE FORMULATED, FURNISHED, OR IN ANY WAY SUPPLIED THE SAID DRAWINGS, SPECIFICATIONS, OR OTHER DATA IS NOT TO BE CONSIDERED AN IMPLICATION OR AUTHORIZATION AS TO ANY PATENT RIGHTS OR CLAIMS OR ANY OTHER PERSON OR CORPORATION, OR INVENTING ANY RIGHTS OR PERMISSIONS TO MANUFACTURE, USE, OR SELL ANY PATENTED INVENTION THAT MAY IN ANY WAY BE RELATED THERETO.

THIS DOCUMENT HAS BEEN PURCHASED BY THE GOVERNMENT AND MAY BE REPRODUCED AND USED IN CONNECTION WITH ANY GOVERNMENT PROCUREMENT OR MAINTENANCE OPERATION.

FOR INFORMATION ONLY, CONTRACTOR MAY AT HIS OPTION DEVIATE FROM THESE PROCESS DETAILS.

REVISIONS			
SYM	DESCRIPTION	DATE	APPROVAL



HOLE DATA		
HOLE	DESCRIPTION	REQD
A	.156 DIA.	5
B	.156 DIA, C ^{3/4} AT 82° ±10° TO .281 DIA., 3 THIS SIDE & 2 OPPOSITE	5
D	.3750 ^{±.0003} DIA, C ^{3/4} AT 82° ±10° TO .415 DIA, OPPOSITE SIDE	6
E	.102 ^{±.003} DIA, C ^{1/2} AT 82° ±10° 1/32 DEEP	2

NOTES:
 1. ALL SLOTS ARE TO HAVE ³² SURFACE FINISH AND FREE OF BURRS.
 2. PLATE SHALL BE FLAT WITHIN .020 TOTAL INDICATOR READING.

ALUMINUM ALLOY 245, TEMPER T3, PER SPEC QQ-A-355
 FINISH: E513 PER SPEC MIL-F-14012
 * COLLINS 530 0036 00

COLLINS PART NO.	QTY	REQD	PART NO.	DESCRIPTION	BAR	BAR SIZE
------------------	-----	------	----------	-------------	-----	----------

LIST OF MATERIAL - COLLINS PART NO. 558 0327 003

DRAWN NUGEN			CHECKED <i>[Signature]</i>	APPROVED	COLLINS-RADIO-00- DEPT-RAD-00-1000- 14214-PH- 51-93	<p>PLATE-CAM</p> <p>DEPARTMENT OF THE ARMY SIGNAL CORPS ENGINEERING LABORATORIES</p> <p>FORT MONMOUTH NEW JERSEY</p> <p>SM-C-248978</p>
UNLESS OTHERWISE SPECIFIED: DECIMAL DIMENSIONS INCLUDING HOLE SIZES MAY VARY ±.008 FRACTIONAL DIMENSIONS INCLUDING HOLE SIZES MAY VARY ±1/64 MACHINED ANGLES MAY VARY ±1° SHEARED ANGLES MAY VARY ±.25° BROKEN ANGLES MAY VARY ±1° ECCENTRICITY BETWEEN ANY DIAMETERS ON THE SAME CENTERLINE SHALL NOT EXCEED .010 TOTAL INDICATOR READING. ALL DIMENSIONS ARE FINISH DIMENSIONS INCLUDING APPLIED FINISH AND ARE GIVEN IN INCHES.			REVIEWED PME		DATE 28 DEC 55 SCALE 1/1	
558 0327 003 + SM-C-248978 360L-248775			APPROVED HLV PME			
COLLINS NO.	QTY	NEXT ASST	USED ON	APPLICATION		